

TRANSFORMATION TEAM #10

To educate the campus on utility costs and usage and explore opportunities to reduce usage and costs by changing how employees and the campus consumes utilities.

Leader:

Randy Hudak

Members:

Paula Congelio

Traci Knabenshue

James Kosik

Keith Lawrence

Daniel Olthaus

Joe Patten

Clement Solomon

Stephanie Toothman



ENERGY SOURCE FOR CAMPUS



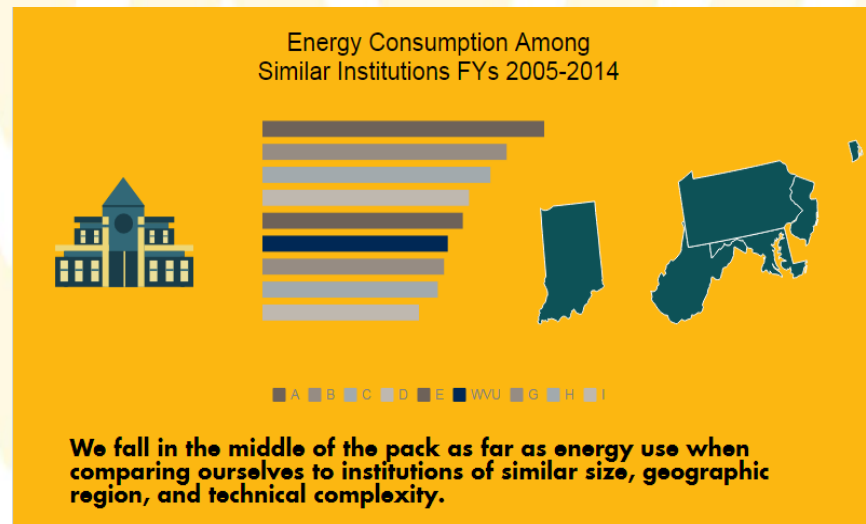
Campus power is purchased from the grid



Steam from MEA in Morgantown is purchased for heating



Natural gas is used to heat buildings not serviced by steam lines



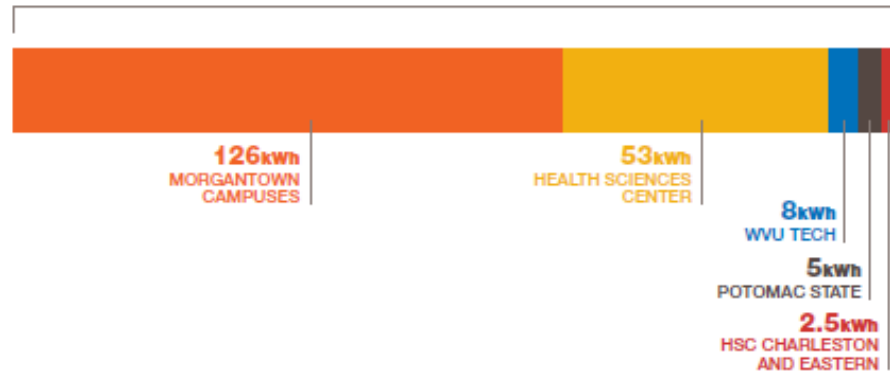
WVU ELECTRICITY CONSUMPTION

IN FISCAL YEAR (FY) 2015, WVU SYSTEM ELECTRICITY USE WAS

194
MILLION KILOWATT HOURS (kWh)

COSTING \$11 MILLION

WVU SYSTEM BREAKDOWN



ENOUGH TO POWER **17,636** HOMES FOR A YEAR



EACH HOUSE REPRESENTS 1000 HOMES



POTENTIAL SAVINGS

HELP US REDUCE ELECTRICITY USE BY 10%

That's equivalent to:

Over

\$1 million

saved on energy costs.

Average emissions savings are equivalent to removing

2,000+

vehicles from the road.

1,000+

homes' energy use for one year

100+ acres of trees

preserved or replenished.

B&W Printer Savings

Other Printers

\$1,285,051.28

Konica Minolta

\$322,067.99

Savings

\$962,983.29

Color Printer Savings

Other Printers

\$2,608,750.72

Konica Minolta

\$710,965.09

Savings

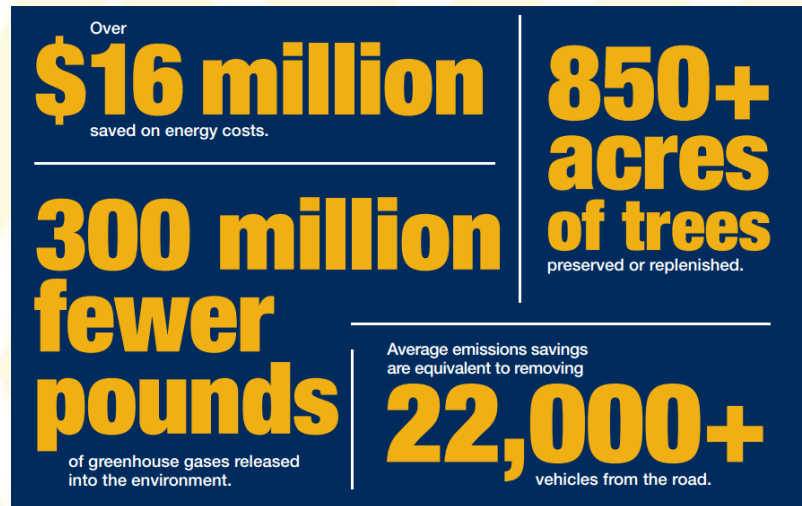
\$1,897,785.63



PHYSICAL INFRASTRUCTURE IMPROVEMENTS

Performance Contracting

- To implement efficiency improvements with minimal up-front costs, and use the savings to pay for the work over time.
- Began in 2006 and now in its 3rd phase has increased energy efficiency in over 75 campus buildings.



PHYSICAL INFRASTRUCTURE IMPROVEMENTS

Building to LEED Equivalent

All new builds meet requirements that are used to fulfill LEED certification.



BEHAVIOR-BASED ENERGY PROGRAM



LIGHTS

/ Turn off lights when leaving a room
— including desk lamps, task lights,
overhead lights



ELECTRONICS

/ Use WVU ITS power management
options for computers

/ Unplug battery chargers when not in use

/ Use centralized appliances
(refrigerators, microwaves, coffee pots)



TEMPERATURE

/ Keep office temperature between 68-74
degrees Fahrenheit and report extreme
temperature changes



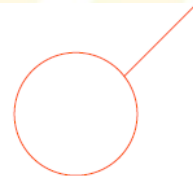
SHARED NETWORK PRINTERS

/ Use centralized printers and
scanners, and double-sided printing

For more tips on how to save energy visit
bureaucracybusters.wvu.edu



BEHAVIOR-BASED ENERGY PROGRAM



LET'S CONSERVE



LIGHTS

- / Turn off lights when leaving a room
 - including desk lamps, task lights, overhead lights



ELECTRONICS

- / Use WVU ITS power management options for computers
- / Unplug battery chargers when not in use
- / Use centralized appliances (refrigerators, microwaves, coffee pots)



TEMPERATURE

- / Keep office temperature between 68-74 degrees Fahrenheit and report extreme temperature changes



SHARED NETWORK PRINTERS

- / Use centralized printers and scanners, and double-sided printing

For more tips on how to save energy visit bureaucracybusters.wvu.edu

 West Virginia University



**“Change is not just a word—
it is an action.”**

-E. Gordon Gee

Open Discussion

To learn more or share ideas,
visit www.sustainability.wvu.edu

