

Adventure WV Orientation Experiences



Orientation Experiences Overview

Optional, pre-college trips and programs for incoming first-year students to assist in their transition to WVU.

Program options vary in length, intensity, activities, depth of adventure, and level of challenge.

- **Small groups** of 8-22 students with upperclassman leaders
- **Team-building** activities and initiatives
- **Adventure** Activities: backpacking, climbing, rafting, service, etc.
- **Daily Discussions:** Making the Transition, Goal Setting, Strategies for Success, Diversity and Inclusion, Healthy Decisions
- **Community:** Students live, travel, cook, play, learn together
- **No cell phones** on longer programs
- Programs are \$95 or less (Free for Pell Grant eligible Students)

Orientation Experience Options

GET A HEADSTART ON COLLEGE!
MORE EXPOSURE LEADS TO GREATER OUTCOMES.

CHOOSE ONE!

NSO ADVENTURE BASECAMP
 A QUICK TASTE OF ADVENTURE
 CONVENIENTLY COUPLED WITH NSO

C² COMMUNITY CONNECTION
 EARLY MOVE-IN
 SERVICE BASED
 ADVENTURE ALTERNATIVE

MOUNTAINEER QUEST
 A BALANCE OF COMFORT AND ADVENTURE
 BASECAMP FORMAT
 MORE CONNECTIONS THROUGH A LARGER GROUP

WVU's AWARD WINNING ORIENTATION TRIPS
 ACADEMIC CREDIT
 DEEP PERSONAL GROWTH/DISCOVERY
 MULTI-ACTIVITY EXPLORATION OF WV

1.5 DAYS **2 DAYS** **5 DAYS** **7 DAYS**

GEC 6 ✓

400 Students

150 Students

300 Students

750 Students

AWV Partnerships

Orientation Experience Options

GET A HEADSTART ON COLLEGE!
MORE EXPOSURE LEADS TO GREATER OUTCOMES.

CHOOSE ONE!

NSO ADVENTURE BASECAMP
A QUICK TASTE OF ADVENTURE
CONVENIENTLY COUPLED WITH NSO
1.5 DAYS

C² COMMUNITY CONNECTION
EARLY MOVE-IN
SERVICE BASED
ADVENTURE ALTERNATIVE
2 DAYS

MOUNTAINEER QUEST
A BALANCE OF COMFORT AND ADVENTURE
BASECAMP FORMAT
MORE CONNECTIONS THROUGH A LARGER GROUP
5 DAYS

WVU's AWARD WINNING
ORIENTATION TRIPS
ACADEMIC CREDIT
DEEP PERSONAL GROWTH/DISCOVERY
MULTI-ACTIVITY EXPLORATION OF WV
7 DAYS
GEC 6

Students choose from multiple itinerary options:

- **Wilderness** (longer backpacking focus)
- **Explore** (shorter backpacking focus)
- **Odyssey** (challenge course focus)
- **Habitat** (Habitat for Humanity focus)
- **Service** (Service work around the state focus)

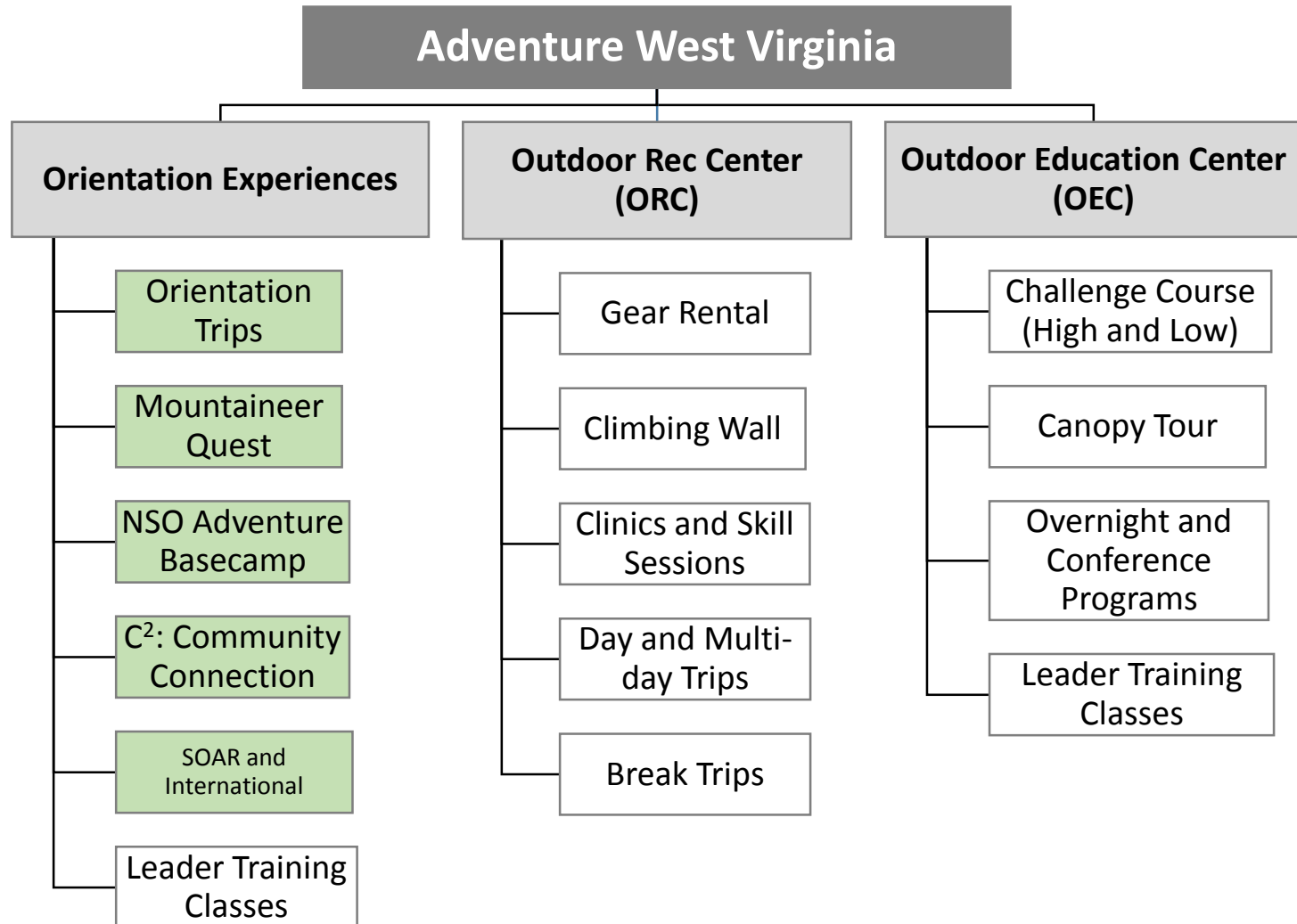
Specialty Programs and Partnerships



- Transfers
- College of Creative Arts, Engineering, Media, Honors Orientation Trips
- Davis College Quest Session and Business & Economics Quest Session
- Potomac State College
- First-Year Pathways
- SOAR (Sophomore Outdoor Adventure Reorientation)

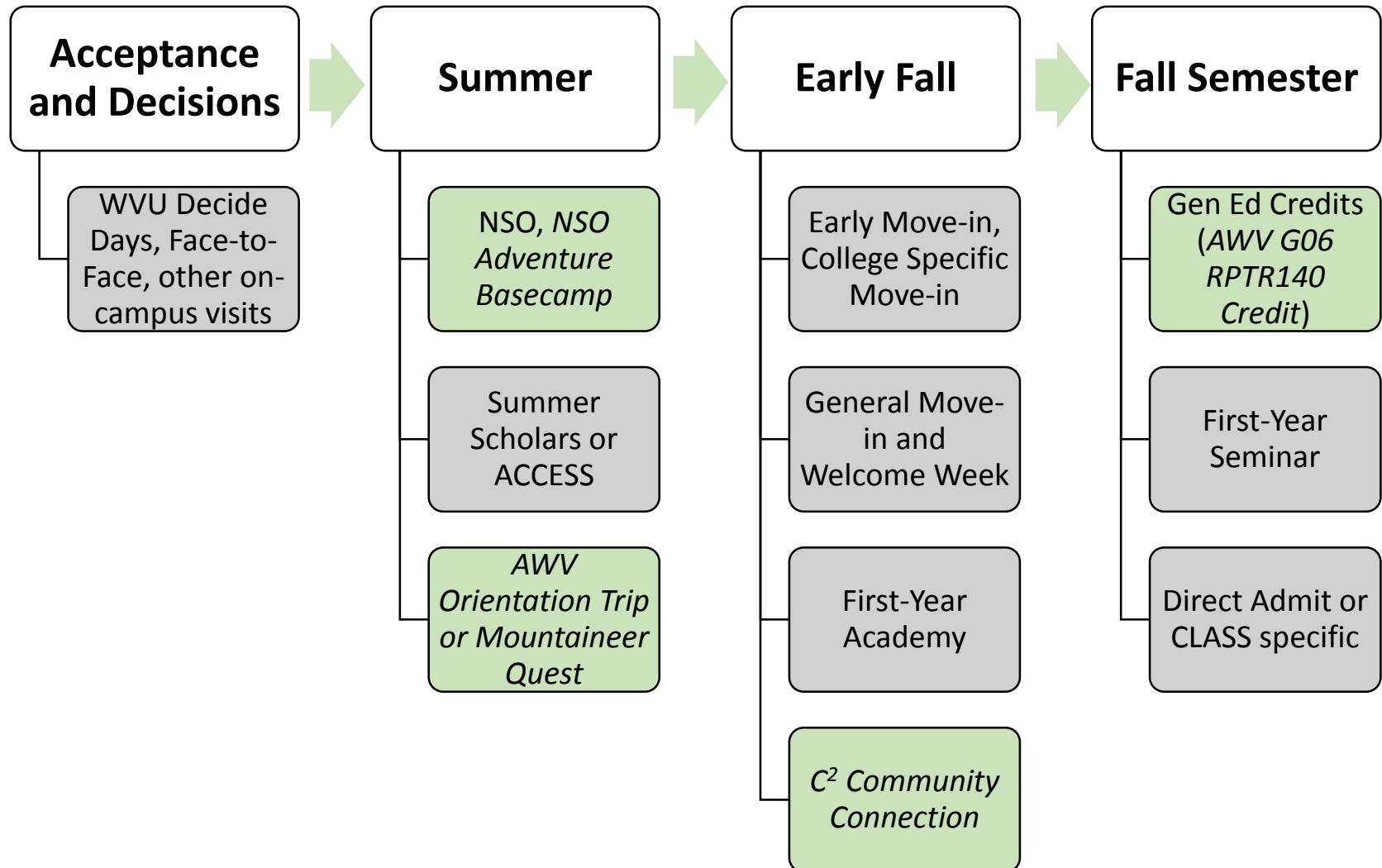
Where do Orientation Experiences fit in?

Within AWW:



Where do Orientation Experiences fit in?

Within the FYE:



Experiences are designed to...



1. Meet other incoming first-years and develop a foundation of **supportive relationships**
2. Set **goals** and reflect on **values** for college
3. Experience **independence** and **personal responsibility** in a facilitated environment
4. Develop **self-awareness** through challenge and reflection
5. Foster positive **relationships with WVU**
6. Get involved with **leadership, teamwork, service**
7. Experience fun **outdoor** recreational opportunities

Growth

2016

- 1,492 Students
- 754 OT, 300 Quest, 150 C², 288 NSO Basecamp

2015

- 600 Students

2003-2007

- Growth from 136-548 Students

2003

- 14 Students on pilot program

Impact



Since 1986, research has shown increased first-year student retention from students participating in Outdoor Orientation Programs, as compared to non-participating students and even other pre-orientation experiences

Research on the Adventure WV's Orientation Trips agrees with this nationwide data: Participants increase in retention, GPA, and graduation rates

- 9% change in retention rate from those who participated to those who didn't (in-state students) (2012-2013)
- 10% change in retention rate from those who participated to those who didn't (out-of-state students) (2012-2013)
- 99% of participants would recommend this trip to another incoming student
- 99.6% of participant parents would recommend this trip to other parents of incoming students

Conclusion



We are here to be a part of improving the First Year Experience, assist in students' transition to college, and partner with other areas of WVU for student success.

We are growing and expanding!

Keep an eye on (and refer students to) Adventureorientation.wvu.edu

Registration for 2016 Trips and Quest opens Monday, Feb 1st

(NSO Basecamp opens in March with general NSO registration)